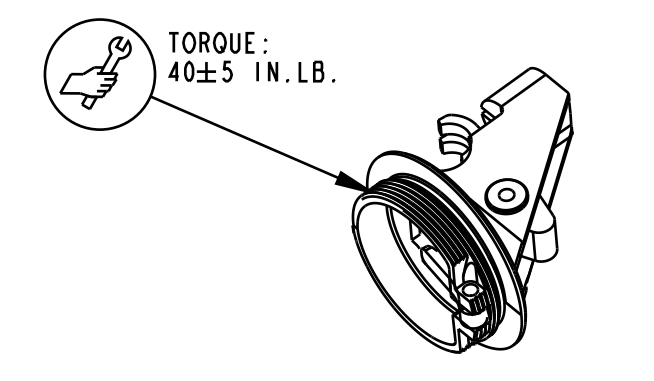
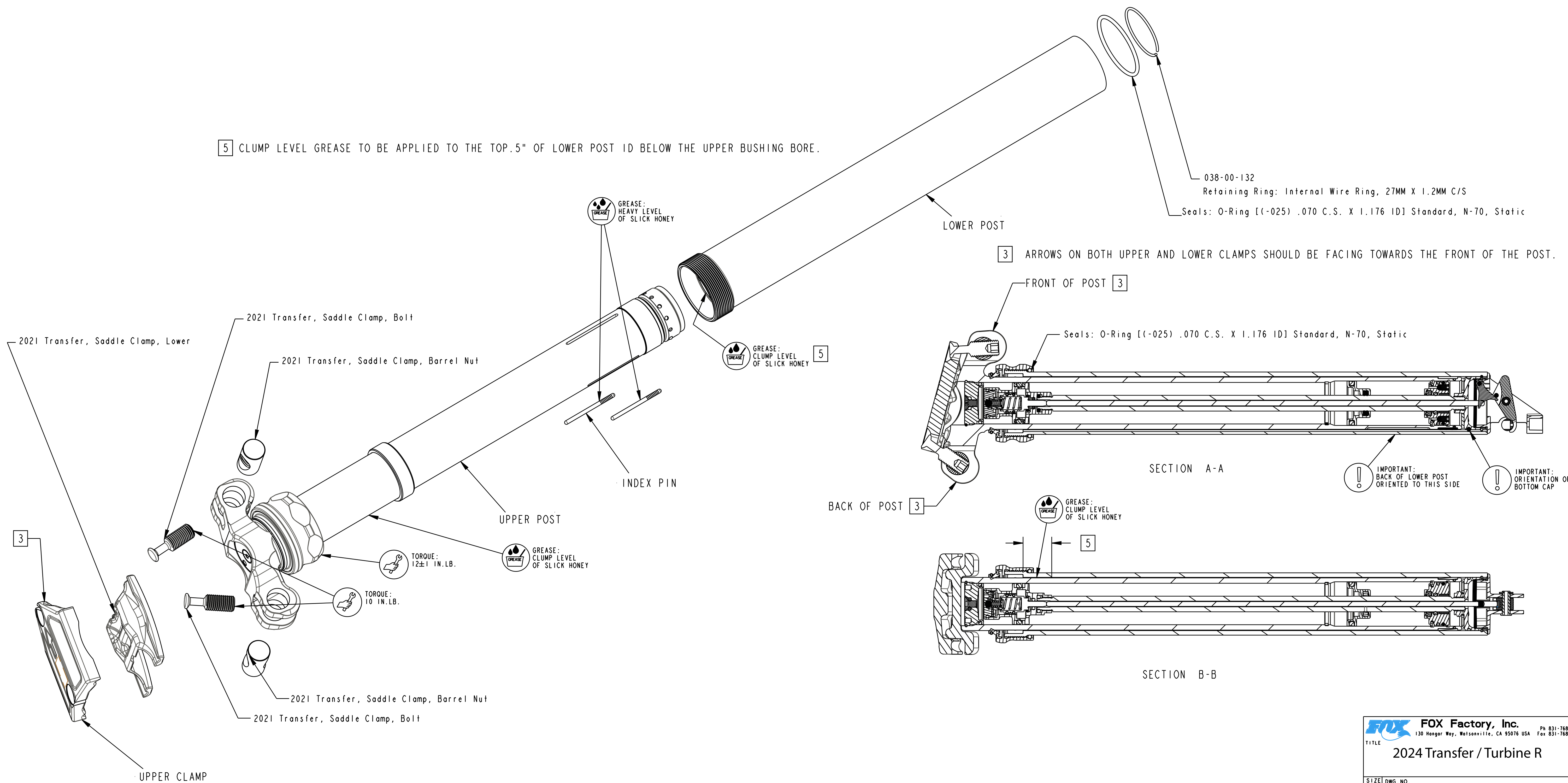


825-07-002-KIT
2018 Transfer, Internal, Die-Cast Bottom Cap Assy



225-00-052
Bushing, Cable, Seat Post

5 CLUMP LEVEL GREASE TO BE APPLIED TO THE TOP .5" OF LOWER POST ID BELOW THE UPPER BUSHING BORE.



PROPRIETARY - THIS DOCUMENT CONTAINS CONFIDENTIAL, PROPRIETARY INFORMATION THAT IS FOR PROPERTY. DO NOT DISCLOSE TO OR DUPLICATE FOR OTHERS EXCEPT AS AUTHORIZED BY FOX.

FOX Factory, Inc.
130 Hangar Way, Watsonville, CA 95076 USA
Ph 831-768-1100
Fax 831-768-9312

TITLE
2024 Transfer / Turbine R

SIZE DWG. NO.
D

PLOT SCALE 1:1

SHEET 1 OF 1